

e-Correspondence

from the Central Regional Council
of the Anthroposophical Society in America



Easter, 2015

Communication Support:

If you are receiving this email as the contact person in your area, please forward it on to all the members in your group, branch or initiative. We want to ensure that all our members in the region remain connected. If you prefer that another member of your group be responsible for receiving and passing this on, please let us know. We need your help and thank you.

Contents:

[Report from Feb24 Conference Call](#)

[Speaking with the Stars Project Overview](#)

[Poem~ A Star is above my head](#)

[Finding the Divine Feminine in the Mystery of Easter](#)

[Celebrating Together throughout the Central Region](#)

[In Regards the Lunar Eclipse on Holy Saturday](#)

[The Beatitudes](#)

[May Retreat CHANGE](#)

[Reports from our Region](#)

[What's Happening in our Region](#)



Speaking with the Stars project

The **Speaking with the Stars** project strives to empower us to ripen our speech, so we can work in a Michaelic way with the spiritual beings of the stars. We encourage individuals, groups and branches throughout the region to prepare for and participate in a collaborative regional Star Festival on Holy Saturday, April 4th, 2015.

The full documents can be found on the Central Region webpage at <http://www.anthroposophy.org/groups/central-region/>

Report from our February 24th Regional Conference Call

Recorded by Alberto Loya

31 members from throughout our region dialed in to speak with us. They came from Texas, Louisiana, Arkansas, Missouri, Michigan, Illinois, Wisconsin, Iowa, Minnesota, North Dakota, and Ontario CANADA.

- Meeting started promptly at 7:15pm CST
- Mary Louise Hershberger recited “The Verse for America”
- Marianne facilitated introductions
- Alberto provided some background on the “Speaking with the Stars” initiative (see [Speaking with the Stars Overview](#) document written by Hazel Archer-Ginsberg)
- Mary Stewart Adams presented on this third trimester of our project
 - She led the audience through an imagination on the apparent rotation of sun and moon around the earth, highlighting their position during the vernal equinox.
 - Mary spoke about finding the Divine Feminine in the mystery of Easter (see Mary’s notes on [The Divine Feminine in the Mystery of Easter](#)).
 - Mary also provided additional indications (“third trimester”) to prepare for the upcoming eclipses during vernal equinox (solar) and Holy Saturday (lunar).

- The various “beehive” groups shared their plans for the coming weeks
 - Ann Arbor, MI:** planning to meet during Holy Saturday just before sunrise, to have breakfast together, read a chapter of Emil Bock’s “Holy Week”, artistic activity, Christian Community service Friday & Sunday
 - West Michigan:** the team is spread out and managed to meet for Holy Nights, planning some activities for Holy Week but not fully defined yet
 - Northwest Michigan:** planning to observe Lenten season, planetary seal artistic activity, but not fully defined yet
 - Chicago, IL:** planning to lead a long list of activities, starting on March 20 and spanning the whole Holy Week through Easter (see [Chicago Easter 2015 Schedule](#))
 - Viroqua, WI:** Planning a potluck on Friday, including some singing, verses, hiking, and reading a lecture on Lunar Eclipses
 - New Orleans, LA:** Planning to get together each night of Holy Week to read Emil Bock’s book. Considering some artistic work on images of zodiac, and showing video from “embryo in motion” series.
 - St. Louis, MO:** local group is studying The Gospel of John, and preparing to host national AGM and CRC conference in October
 - Iowa:** two persons in study group at the moment, reading “Human Questions, Cosmic Answers”, Holy Week activities not planned yet
 - Twin Cities, MN:** Dietzels will be hosting some evenings, 7-pointed star movement, singing, studying, star gazing. Also planning to get together before sunrise on Holy Saturday and for breakfast.
 - GRACE:** Planning to meet at a private home on Holy Saturday for breakfast. Group is reading Judith von Halle’s “Descent into Earth” and also reading a book on transformation of evil.
- Dennis Dietzel suggested three common elements that all beehive clusters could include in their activities during Holy Week (See [Celebrating Together throughout our Central Region](#) in this issue.)
- Mary Louise Hershberger closed with the theme verse “The stars spoke once to man”
- Meeting was adjourned at around 8:30pm CST

Project Overview by Hazel Archer-Ginsberg

The Central Regional Council began to explore what was coming toward us from the future during our May 2013 gathering in Viroqua, WI. Albert Linderman joined us to provide an overview of Theory U in conjunction with our theme of ‘Social Imagination: Weaving Past and Future through Presencing’. In imagining what was next; we wondered: Is there perhaps another form for our gatherings that we may want to consider?

The Grand Sextile of July 29th 2013 caught the imagination of many of us. From that CRC member Marianne Fieber asked the question: What other important celestial events can we expect? Of course the stars always have something to say. The question became how can we be part of the conversation? Mary Adams, herself a rising star with roots here in the Central Region knew there was a buzz about a rare lunar tetrad. We began looking at Rudolf Steiner’s ‘Stars Verse’ with the idea that humanity must now develop a conscious conversation with the cosmos - and the **‘Speaking with the Stars’** initiative began.

A star is above my head –

Christ speaks from the star:

"Let your soul be borne by my strong force —

I am with you;

I am in you;

I am for you;

I am your I.

— Rudolf Steiner

From this process, a two-year project began to emerge in response to cosmic events. We started to work with Steiner's lecture *Human Questions and Cosmic Answers*. Folks from the Central Region were invited to join in our spiritual research, taking the work into the Holy Nights of 2013-14. Our intention: Cultivate throughout the coming year a cosmic connection, culminating in a region-wide response, especially around Easter 2015.

We dedicated our work for 2014 as a research and tutorial year to introduce ourselves to the stars and gather our collective voice for our speaking. Taking a clue from the cosmos, those willing to be collaborators in their local areas, were dubbed 'Beehive Clusters', which came from an image shared during our January 2014 call, of the Cancer constellation which can be viewed as the pre-formation of the heart-forces.

[{continue reading}](#)

Finding the Divine Feminine in the Mystery of Easter

By Mary Stewart Adams

3.4.15

Our call took place on 24 February, 2015, the Feast of Matthias and eve of the anniversary of the birth of Rudolf Steiner, in 1861. Matthias holds the mystery of community in his role as the 12th member of the Apostles, chosen to replace Judas ten days after the Ascension. It is no coincidence that Rudolf Steiner's birth should follow this feast day, since much of his work was toward realizing what he described as the World Pentecost.

Now, specifically to the content of the call:

The celestial environment in which the Easter Festival occurs every year is never the same from one year to the next, so it is incumbent upon us as spiritual scientists and researchers to be aware of the celestial gesture each year. In the lectures contained in "The Wrong and Right Uses of Esoteric Knowledge", Rudolf Steiner drew attention to the solstice and equinox axes of Gemini/Sagittarius and Pisces/Virgo respectively. While the Gemini/Sagittarius axis is aligned to the forces of midday and midnight, the axis of Pisces/Virgo is aligned to the forces of dawn and dusk, and it is here that we can have a free encounter with the beings of the spiritual world. The example is of how one can strive to be cognizant of experience just before waking from sleep (dawn), and of what one carries into sleep (dusk). In the cycle of the year, the Sun appears in front of the region of Pisces stars at its moment of Vernal Equinox during our time (first day of Spring is akin to dawn in the cycle of the year), while standing opposite, one finds the stars of Virgo, the maiden (where point of Autumn Equinox occurs, which is akin to dusk in the yearly cycle).

At this point participants in the call were asked to have a pencil and paper in hand, and to draw the following, in order to find ourselves spatially in this celestial environment:

1. Draw a human figure
2. Draw a circle around the figure
3. Make a cross from top to bottom and left to right through the figure

4. Draw a larger circle around the first circle

5. Extend the left to right line on either side of the smaller circle until it touches the larger outer circle

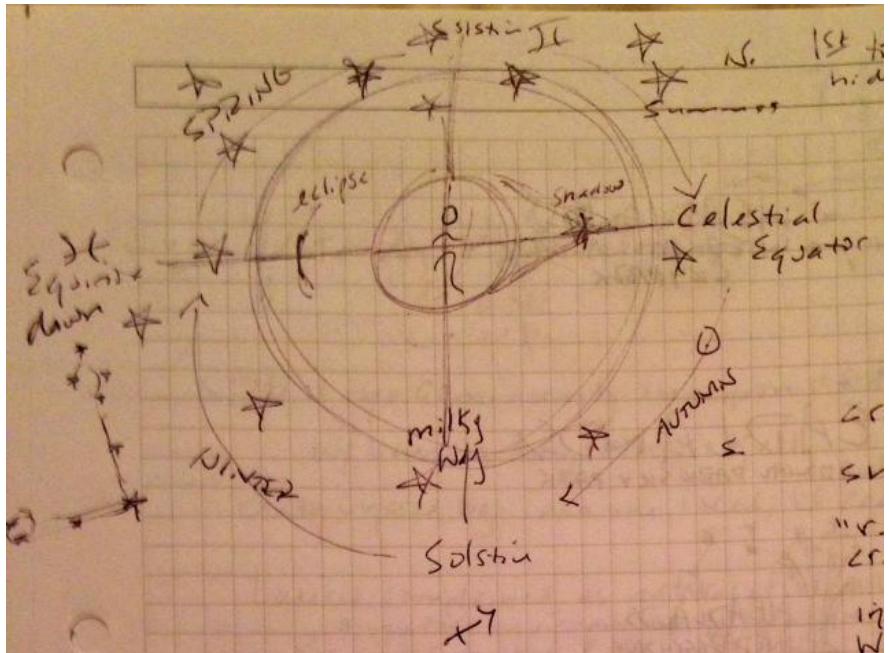
6. On the left side where the line touches the outer circle, write the word 'dawn'; this is the Vernal Equinox point

7. On the right side where line touches outer circle, write the word 'dusk'; this is the Autumn Equinox point

8. Beyond the dawn point, write the name or symbol of the constellation Pisces

9. Beyond the dusk point, the name/symbol for Virgo

What happens in the sky at the moment of Vernal Equinox is that the Sun appears to rise up across the Celestial Equator, which is the Earth's Equator (the line drawn from left to right) projected onto an imaginary celestial sphere (the outer circle). If we were able to see the stars beyond the Sun at this moment, we would see the stars of the constellation Pisces, the Fish.



The Festival of Easter is not celebrated at this moment of Sun crossing the celestial equator into the Northern Celestial Hemisphere, but can only happen on the first Sun-day, after the first Full Moon after this moment of Sun at Equinox. At this point in the call, participants were asked to draw an image of the Sun just above the line at the point of dawn/equinox on the left, and an image of the Moon just below the line at the point of dusk/autumn equinox on the right. This was to demonstrate the celestial drama taking place at the time of the Easter Festival each year, which is that the Sun has returned to dominance in the skies of the Northern Hemisphere, whereas the Moon, now come to its fullest phase, can only come Full below the celestial equator. Every Full Moon is on the opposite side of the Earth from the Sun, so if the Sun is above the Celestial equator, every Full Moon must be below. The first Full Moon below the celestial equator each year, known as the Vernal Full Moon will always appear in front of the stars of Virgo. So the image is of Sun rising up in front of Pisces stars shining toward humanity on the Earth, which appears from the Sun perspective to be in front of the region of Virgo stars. [{continue reading}](#)

Celebrating Together throughout our Central Region:

During our latest regional call, February 24th, Dennis Dietzel spoke of three activities or celebration elements which you may choose to incorporate into your group activity during the upcoming eclipse events, throughout Holy Week and/or on Easter Sunday. In this way we may “hear” and offer an echo toward the stars and cosmos as we turn our attention to these celestial events.

Element #1

Speaking the theme verse for this project:

The Stars spoke once to Man
It is world-destiny that they are silent now.
To be aware of the silence,
Can become pain for earthly man.
But in the deepening silence,
There grows and ripens what Man speaks to the stars.
To be aware of this speaking,
Can become strength for Spirit-Man.

Given to Marie Steiner by Rudolf Steiner on December 25, 1922

There are many versions; this is the one we have been using with greater regularity.

Element #2:

Offering the Hallelujah in Eurythmy; either with a trained eurythmist or through the practice of “folk eurythmy”. The following link is a clear version of the Hallelujah in Eurythmy if you need a refresher – please do not choose this over a live eurythmist, but if you can’t find one... this may help.

<https://www.youtube.com/watch?v=gzo7UnxToPE>

Suggestion #3:

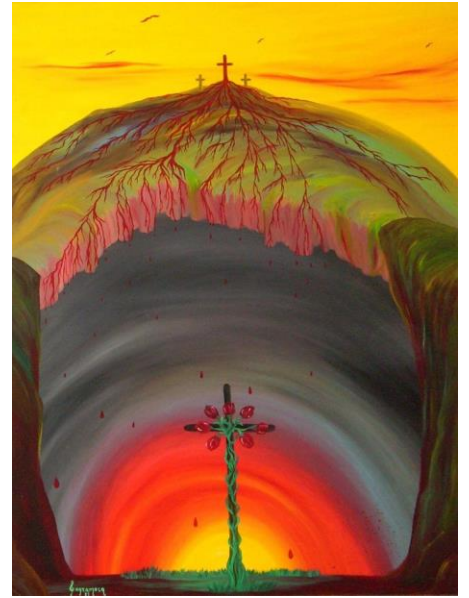
Stand at sunset and sunrise and hold our Central Regional consciousness in your heart. Beginning perhaps in a gesture of reverence as is depicted by Mary in the painting to the right. From reverence, reach or grow your arms outward to resemble an “AH” as an outward expression of the inner experience of embracing the entire region; creating a vessel; a vessel created through Michaelic strength and courage. This AH gesture can be related to veneration if it is very wide, or wonder if it is more like the vowel sound AH. The reverence gesture is related more to the vowel sound E in German or long A in English, pronounced ay. In true reverence there is also an aspect that is like the shield of Michael, hence the gesture has a crossing over the heart.



In Regards the Lunar Eclipse on Holy Saturday 4 April 2015 and the Interior of the Earth

~ Central Regional Council member Hazel Archer Ginsberg

In the New Mysteries we follow the path of Rosicrucian/Christian initiation through Holy Week. With every step, from the recognition of the old atavistic Sun on Palm Sunday, through to the meeting of the Saturn-Spirit and The Harrowing of Hell, we sow healing seeds, sprouted in the blood of Christ, that spark the rising of the New Sun of Easter, within ourselves and in the Universe. Each of these steps through the planetary spheres leads to a conquest of a corresponding layer in the interior of the earth. The Beatitudes are the spiritual weapon we must wield to fortify the development of self-determination in the human ego led by Christ, giving us the strength to make the darkness transparent. Like Christ, we must descend to ascend.



Every year we have a chance to recapitulate the original Easter event.

We rest on the Sabbath, Saturn-day – In Christo morimur - This is the Mystic-death or temple sleep of the initiate; remembering that In the Garden of Gethsemane - the midpoint of the earth, the epicenter of the

Matthew 5 New King James Version The Beatitudes

And seeing the multitudes, He went up on a mountain, and when He was seated His disciples came to Him. Then He opened His mouth and taught them, saying:

“Blessed are the poor in spirit,
For theirs is the kingdom of heaven.
Blessed are those who mourn,
For they shall be comforted.
Blessed are the meek,
For they shall inherit the earth.
Blessed are those who hunger and
thirst for righteousness,
For they shall be filled.
Blessed are the merciful,
For they shall obtain mercy.
Blessed are the pure in heart,
For they shall see God.
Blessed are the peacemakers,
For they shall be called sons of God.
Blessed are those who are persecuted
for righteousness’ sake,
For theirs is the kingdom of heaven.”

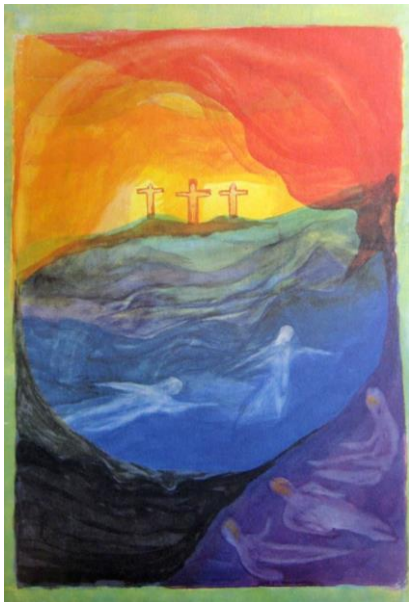
cosmos - between the rocky hill of Golgotha, part of the lunar Mount Moriah, and it’s polar opposite the Solar Mount Zion, there was a New Tomb where the body of Christ rested, and yet it was the Oldest Tomb, for it was formerly a primal fissure, a gorge splitting Jerusalem in two, called by some Adam’s Grave –known as the gate to the underworld. The earthquakes of Good Friday and Holy Saturday tore open the original fissure. The veil of the Temple “was rent in twain”. Vistas were opened into the interior of the earth. “He was lowered into the grave of the earth’, and so it was, that The Christ went into the Earth’s Interior, His blood becoming the medicine for our continued evolution. The darkness of Saturn is lit up from within by the Resurrected Sun. The Easter garden begins to bloom, so that our soul can behold, like the Magdalana before us, The Risen One as the gardener of the New Jerusalem.

In ‘The Birth of a New Agriculture: Koberwitz 1924’ , we learn that the earth underwent a change through the deed of redemption on Golgotha, a transformation of the unruly Mars powers of rusty iron into the silvery light of Mercury. This transforming of iron thru the sacred mystery of the Christ-blood is a determining factor in the transformation of earthly substance, which will later be carried over into the transubstantiation of the earth. The spirit radiates from the heights and yet is also carried to us by the eternal divine world of the depths. ‘May there ascend from the Depths the prayer that is heard in the Heights’. We can send our prayer to the

Christ-heart in the earth's depths, to help overcome and redeem the adversarial powers that hold sway in the nine layers of the earth's interior. The agricultural course was a stepping stone to this ultimate aim.

Spiritual science tells us that when the blood flowed into the earth from the cross on Golgotha, a new Sun-globe was born in the interior of the earth. This golden earth-center is the legendary land of Shambhalla, hidden away, yet waiting to be re-discovered by the seeking, Christ-guided human soul.

The Tomb becomes the altar, a sacred place to commune with the gods – with the souls of the departed as our intermediaries. The tomb becomes the Round table, and the Parsifal question leads us to find Christ in the etheric.



Also working with us from the time of the Vernal Equinox is the Archangel Raphael, who holds the staff of Mercury, offering us the healing power of the Caduceus through the grace of the living Christ, who stands as the middle pillar within us all.

Before the mystery of Golgotha, the task of evolution was that the cosmos would become human, after this turning point, the human becomes cosmos -The New Sun -The imperishable resurrection-body uniting with the Cosmic- Sophia.

So during the Lunar eclipse of Holy Saturday 4 April 2015, we have the opportunity to stand as Michaelic warriors holding the light, sending our shining heart-thinking into the heights and the depths. Remembering all the while what was written on the urn that holds the ashes of Rudolf Steiner: "To create centres of peace and love in which the Christ can resurrect."

May 2015 retreat – DATE CHANGE – October 7-8 – St. Louis, MO

The Central Regional Council is beginning to look ahead toward our Annual gathering!

During our recent February CRC meeting in Minneapolis, MN we determined that rather than gathering in May, which is an old form without connection to our current initiative, it would be ideal to meet in conjunction with the national AGM, since the final eclipse in the tetrad series we started working with two years ago occurs during the Michaelmas season. Our St. Louis friends are busy coordinating plans for the national AGM and we have decided to meet as a region prior to that. Gathering for **the culminating event of our *Speaking with the Stars* project** as a prelude to the AGM, **Wednesday October 7th in the evening and a full day Thursday October 8th** encourages regional members to remain in St. Louis for the national meeting. More details will be provided as soon as possible. Stay tuned!

Reports from our Region:

Holy Nights 2014-15 in New Orleans

~ Margaret Runyon, New Orleans, Louisiana

Since Christmas 1999, our Steiner Study Group in New Orleans has met to read every night of the Holy Nights, from Christmas through Epiphany. We have established the tradition of reading, in turn, Rudolf Steiner's series of Gospel lectures along with The Fifth Gospel. It has been richly nourishing to focus on this vital material in such an intensive way – it definitely bears repeating ... every five years!

The Matthew Gospel lectures were up this year, and our participation in the Central Region's *Speaking with Stars* project brought a new focus to our work together: relating the content of the twelve lectures in this series to the constellations. We had indispensable help from Mary Stewart Adams, who in response to my query on our last conference call, took it upon herself to go through the synopsis of each lecture and suggest the corresponding constellation. The first lecture she aligned with Libra, and remarkably (!) the subsequent lectures fell into place around the zodiac, winding up on the twelfth lecture with Virgo.

This was all the more fascinating and challenging, because it was 180 degrees from the indications she had shared in her "In Consideration of the Holy Nights of Christmas." We decided this was like experiencing the festivals "reversed" in the southern hemisphere – with Easter in the fall and Christmas at mid-summer. Both sides of the sphere are a true experience (they have to be!). It is up to us to discern/distill the essence of the festival, wherever it lies on the Earth's seasonal cycles. So, armed with the New Images of the Zodiac, we followed each night's reading with a contemplation of the balancing images – the one corresponding to the lecture we just read, and the one from Mary's original Holy Night's indications – and experienced the gestures and consonant sounds for each in eurythmy. The juxtaposition was a wonderful and revealing exercise.

As in past years, we began each evening's reading with the full Foundation Stone meditation, and closed with just the fourth panel of the Foundation Stone. And as Twelfth Night is the kick-off for New Orleans' Carnival Season (Mardi Gras), we celebrated with a festive king cake the completion of our journey together through the Holy Nights.

A Gathering of Group and Branch Representatives in the Eastern Region – January 31 – February 1, 2015 in Spring Valley, NY

~ Marianne Fieber, Central Regional Council

I had the great good fortune to attend a meeting of eastern regional leaders to discuss how they might collaborate with greater consciousness and strengthen their regional identity. Marian Leon from the Anthroposophical Society headquarters had invited a representative from each of the other two regions and so Micki Leach from Santa Fe, NM and I were present, she from the Western Regional Council and I from the Central. The meeting was held in the main room at Sunbridge College or Threefold Educational Center. There were about 14 Groups or Branches represented by leaders in their areas.

The Verse for America was read by Herbert Hagens and then there was a rich sharing of what activities, initiatives and studies are taking place in the different locations. Nathaniel Williams led us in a reflection of Letter Three from *Life Nature and the Cultivation of Anthroposophy*. He highlighted many wonderful thoughts to consider about how we might approach our work in anthroposophical groups. I encourage everyone to find a copy of that letter from the book and read it with your group. There are many challenges and indications for how we are in service to the life of the Anthroposophical Society in even our smallest groups. We are encouraged to remain awake to every human being and recognize that each is an opportunity for a living spiritual encounter. If we are open to the wonder of the other, there pervades a particular tone that can be sensed in our meetings and gatherings, a tone of Love.

A letter from Per Esenman was shared which provided a lovely, simple and threefold personal strategy to be the foundation stone of the “Goetheanum in the West” which is not a building or structure but the spiritual space we all are cultivating through our anthroposophical work. Per wrote of the need for connection, warmth and rhythm which were then connected with Rudolf Steiner’s “basic exercises”. We might see the relationships as follows:

connection and openmindedness
warmth and positivity
rhythm and will

Another question that was raised had to do with the General Section of the School for Spiritual Science and what exactly is the work of the general section? Perhaps this is work for us to consider fostering in our groups and branches. What do you think that work is? I’d love to hear what you think and if you feel you are incorporating that into your local work. Please send in a replay if you’d like to share.

WHAT’S HAPPENING IN OUR REGION?



ANTHROPOSOPHIC JULY 10 – 12, 2015
PSYCHOLOGY
ASSOCIATES OF
NORTH AMERICA

North Dakota Anthroposophic Counseling Psychology Introductory Workshop

With William Bento, Ph.D. and Roberta Nelson, Ph.D. and
Eurythmy by Karen Derreumaux
Maryvale Retreat, Valley City, ND 58072

Pre Registration: \$175 and \$195 at the door

This first of two workshops will touch on the themes:

Fundamentals of Anthroposophic Psychology
The Counselor’s Mandate: Personal Transformation
Sacred Wounding/Primal Wounding

Together we will address leading questions such as:

- How does spirituality fit into the developmental process?
- How does Anthroposophic Psychology’s comprehensive view of personality augment current theories and practices?
- How can modern pathology be interpreted as a means to discovering a path of personal development?

For more information: Call Mary M. Hart at 916 741-3010 or email admin.apana-services.org

AUGUST 2015

Inviting Lyre Friends from Around the World . . .

The Lyre as Instrument for Peace: Giving Ear Toward Understanding and Reconciliation;

2015 International Lyre Conference 3-8 August, 2015

2015 Lyre Pedagogy Conference 1-3 August, 2015

DETROIT, MICHIGAN, USA



What is the task of the lyre in our time? What is the full reality of the lyre tone? Is it possible that there is more to this instrument than we, in our richly varied endeavors, have so far managed to bring about? Contemplating a thematic focus for the next International Lyre Conference, the Board of the Lyre Association of North America, inspired by the suggestions of Channa Seidenberg, has felt compelled to ponder these questions in the context of our present global situation and to consider whether the lyre may have something particularly important to offer in our time. We have found it of interest to remember that during each of the regencies of the Archangel Michael* throughout history, there has actually been a lyre on the earth. We wonder if the existence of the lyre in our contemporary world may suggest that this instrument, with its unique tone, has the capacity to elicit new thoughts about how we might learn to work together. How could this be so? The sounding of even a single lyre tone evokes a listening response – not just the usual “listening to,” but a deeper “listening into.”

For additional information, [please visit our website](#)

The e-Correspondence will be created four times per year in anticipation of the quarterly festivals. This is a change from a monthly rhythm. We wish to continue hearing from all of our members, groups and branches throughout the Central Region. Your contributions to this publication provide inspiration to others planning for or coordinating events in their own areas.



If you have any suggestions or contributions for upcoming issues, please send them to Marianne Fieber at marianne.fieber@yahoo.com. In the subject line, indicate that they are for the e-correspondence. We hope this format will help us reach members in a timely way with information that is of interest.

Some simple guidelines for submissions:

- * Electronic submissions only to marianne.fieber@yahoo.com
- * Poetry or thoughts coming out of your work with anthroposophical ideas
- * Activities taking place within the Central Region
- * Reports and photos from anthroposophical events offered by Groups, Branches or Initiatives
- * Activities which are led and/or developed by members living within the Central Region

Note: We reserve the right to edit contributions as needed.

The Central Regional Council is:

Dennis Dietzel, Roseville, MN

Marianne Fieber, Viroqua, WI

Mary Louise Hershberger, Fargo, ND

Alberto Loya, Ann Arbor, MI

Hazel Archer-Ginsberg, Chicago, IL