

A Cosmic Wake Up Call: **The 'True' Date of Easter 2019**

We know that Easter is determined by a cosmic alignment of Sun, Moon & Earth. 1st the Sun must come into its place of balance at the Vernal Equinox. Then the Sun waits for the Moon to come into Fullness, so that the rays of the Springtime Sun can be reflected to us on Earth. The Moveable Feast of Easter then arrives on the 1st Sun-day after, which brings earthly humanity into connection with the Sun-forces.

This year, the Spring Equinox is at 4:58 pm CDT on March 20th. The Full Moon also comes on March 20th, about 4 hours later, at 8:43 pm. By these calculations, the 1st Sunday after is, March 24th. So this, my friends, is the 'True' date of Easter Sunday for 2019.

But if you look on the internet or on the 'Official' Church Calendar, it says Easter is April 21st 2019.

Dear Friends, **This is extremely important! We must vigorously apply what we know to be true & not take anything at face value.** It is so easy to be asleep & miss these powerful opportunities to be in cosmic alignment.

Every year, humanity has a responsibility to Consciously Resurrect this 'Turning Point of Time' in our Thinking, Feeling & Willing, to participate in Christ's deed which planted the seed of our redemption from the fall, which we must cultivate!

If we sleep thru this opportunity, the death forces will strengthen.



Dr. Lilli Kolisko established important scientific documentation on this very subject, following initial indications given by Rudolf Steiner.

In 1943, Easter fell shortly after the equinox, on March 28th. The Church authorities in England had ruled that the Easter Full Moon should be considered to be a month later & that the festival should be celebrated on April 25th 1943, Even though the Royal Astronomer maintained that the earlier date was correct.

Lili Kolisko discovered through her experiments the true cosmic reality. Every day she repeated her experiments. She showed that one can obtain a picture of life-force activity with solutions of minerals representing key planetary forces –such as Silver Nitrate, Iron Sulphate or Gold Chloride, displaying colors & forms which reveal the invisible etheric forces working on earth or in plants in specific ways & at specific times. On Sunday March 28th 1943, an enhanced form & color appeared. On the Church authorities' preferred date of April 25th there was no difference from the pattern of any other day.

A similar strengthening of the etheric forces was revealed on the true Whitsuntide date, six weeks after the real March 28th 1943 Easter.

You can read the full documented research [here](#): (Many thanks to Patricia Kaminski for sharing this link)



Below is a powerful quote from Rudolf Steiner reminding us not to be blinded by the materialism that wants to keep us bound to the earth:

“The Easter Festival, is intended to remind us of an event whose significance lies, not merely within the course of earth-evolution, but within the whole world-order into which humanity has been placed. Therefore the time of the Easter festival must not be determined by ordinary earthly conditions; it is a time that can be ascertained only when the human being turns their thoughts to the worlds beyond the earth. And there is deeper meaning still in this plan of a movable time for the Easter festival. It indicates how through the Christ Impulse humanity is to be set free from the forces of earth-evolution pure and simple. For through knowledge of that which is beyond the earth, humanity is to become free of the evolution of the earth, and this truth is indicated in the manner of dating the Easter festival. It contains a call to the human being to lift himself up to the worlds beyond the earth; it contains a promise to humanity that in the course of world-history it shall be possible for him, through the working of the Christ Impulse, to become free of earthly conditions.

The time has come when humanity must realise with full and clear consciousness that supersensible knowledge has now to arise out of the grave of the materialistic outlook. For together with supersensible knowledge will arise the knowledge of Christ Jesus. In point of fact, man has no other symbol that fits the Easter festival than this — that **mankind has brought upon itself the doom of being crucified upon the cross of its own materialism.** But man must do something himself before there arises from the grave of human materialism all that can come from supersensible knowledge.

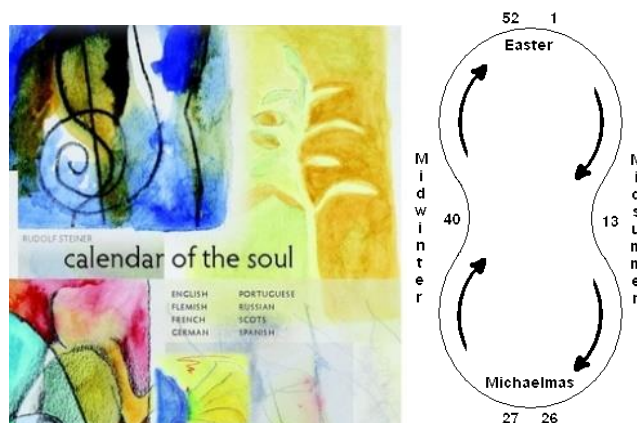
The very striving after supersensible knowledge is itself an Easter deed, it is something which gives man the right once more to keep Easter. Look up to the

full moon and feel how the full moon is connected with man in its phenomena, and how the reflection of the sun is connected with the moon, and then meditate on the need today to go in search of a true self-knowledge which can show forth man as a reflection of the supersensible. If man knows himself to be a reflection of the supersensible, if he recognises how he is formed and constituted out of the supersensible, then he will also find the way to come to the supersensible.

The truth is, we are to-day living in a time when Christ Jesus is being crucified in a very special sense. He is being put to death in the field of knowledge. And until men come to see how the present way of knowledge, clinging as it does to the senses and to them alone, is nothing but a grave of knowledge out of which a resurrection must take place — until they see this, they will not be able to lift themselves up to experiences in thought and feeling that partake of a true Easter character.”

~[Hazel Archer Ginsberg](#)

<http://reverseritual.com/urgent-please-read-spread-the-word/>



The continuing conversation on the “True” Easter:

As we know the ‘**Calendar of the Soul**’ starts with **Easter Sunday, Verse #1. The Goetheanum has chosen to start the Calendar of the Soul Year with 24 March 2019**, in alignment with the spiritual scientific research of Rudolf Steiner.

The cosmic dance is fluid, which is why Easter is a ‘Moveable Feast’. Steiner’s indications invite us to participate in this Cosmic & Earthly ‘Turning point of Time’. The man-made church calendar adheres to a template which no longer reflects

the true nature of the stars, & yet, since it represents the **concept of 'Time'**, within the eternally shifting **nature of 'Space'**, it offers us the opportunity to do the work of **purifying our etheric body, where the mysteries of Time, & Rhythm are tantamount to achieving what Steiner calls 'Life-Spirit'**.

Perhaps this was why Rudolf Steiner focused on the significance of the etheric body, in his 'Easter, [Young Doctors Course](#)', & in the lecture 'The [Easter Festival in the Evolution of the Mysteries](#)' as well as giving the Eurythmy forms for the Foundation Stone Meditation, at the time of the 1924 'Easter paradox'. Although when he spoke to the workers around the time of the Cosmic Easter, in "[Star Wisdom, Moon Religion, Sun Religion](#)" & "[Easter as a Chapter in the Mystery Wisdom of Man](#)" he emphasized the astral aspect.

The Sun, Moon & Earth in relation to **the Zodiac, a division in Space**, invites us to do the work of **purifying our astral body, in the striving to achieve 'Spirit-Self', where the mysteries of 'Space', which the Fixed Stars of the Zodiac represent, come into play.**

So this year we have an opportunity to grow the seeds of BOTH Manas & Buddhi, in the evolution of our True future Selves, NOW!



~Blessings Friends, Let's continue to keep the conversation living

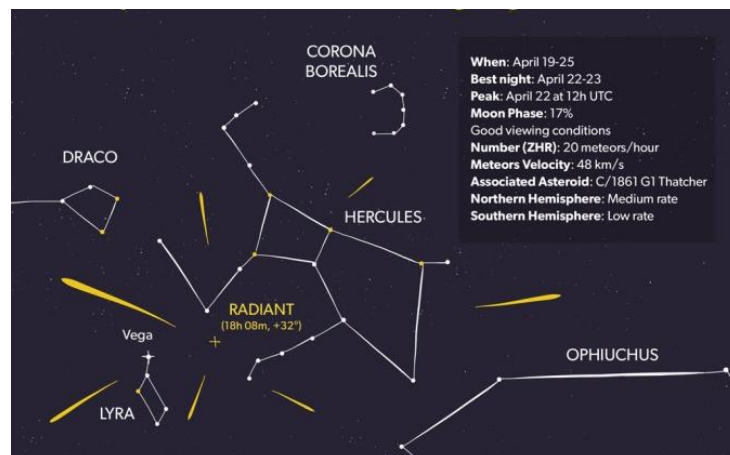


Ross Rentea MD & The Kolisko Team will be taking up "seed germination experiments on these two dates (March 24 and April 21), and will also compare water coming from natural Springs on these two Sundays. These experiments will

be important not only to shed light on this question of the so called ‘Easter paradox’, which incidentally will not occur again until 2038, but also to make the attempt to demonstrate whether “Easter water” as such has an easily observable effect that can be used in the improvement of the making of anthroposophical medicines.”



As we have been saying, this year, 2019, the Cosmic & the Church dating of Easter, Ascension, & Whitsun are different. The first Full Moon of Spring occurs at 8: 42 pm CDT, about 4 hours after the moment of the Vernal Equinox at 4:58 pm CDT. We calculate the Moveable Feast of Easter thru this astronomical phenomenon, so that the sacred festival occurs on the Sunday after, which is **24 March 2019** – the eve of **The Feast of the Annunciation**, also known as Lady Day, the Feast of the Incarnation (Festum Incarnationis), Conceptio Christi (Christ’s Conception), **which commemorates the visit of the Archangel Gabriel to the Virgin Mary, to announce that she would be the mother of Jesus Christ, the Son of God.**

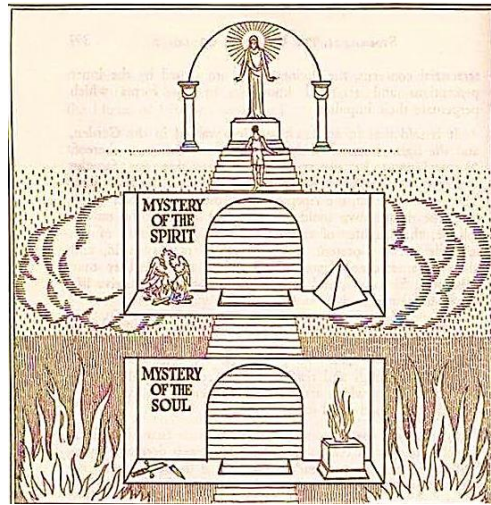


Since Easter happens on the Earth, if we follow the Gregorian calendar rules for dating Easter, which is want to fix the moveable, then Easter is observed on **21 April 2019, at the peak of the Lyrid Meteor Shower.**

May we be the bridge between the above & the below...

~[Hazel Archer Ginsberg](http://reverseritual.com/non-angli-sed-angeli/)

<http://reverseritual.com/non-angli-sed-angeli/>



The Northern & Southern Mystery Streams as they relate to the 'Easter Paradox'

Rudolf Steiner connects the **Northern path** to the **Sun Mysteries**, an initiation thru the **outer world of nature & the cosmos**, enacted at the time of the **Autumn Equinox**. The **Adonis Mysteries** revealed the **experience of the human soul after death**; the ascent into the **macrocosm**, to unite with the Spirit of the Sun. The threat to the pupils on this path was **Ahriman**, who seeks to keep humanity bound to outer material phenomena.

In the **Southern Mysteries**, the initiatory path of the **Moon**, led the pupil into the **inner nature of their own being**. This revealed the experience of **existence before birth**, the descent into the **microcosm**. These rites were enacted at the nearest **Full Moon** to the **Spring Equinox**, where the pupil gazing up thru the sphere of

the Moon was able to see into the Soul of the Sun-sphere. Their main opponent or tempter was **Lucifer**.

Both paths, although completely different, **arrived at the same goal – the union with the cosmic Christ in the sphere of the Sun.**

These 2 paths were developed prior to the Mystery of Golgotha, in strict separation from each other. **Thru Christ's Deed, the possibility was created for every human being to receive the fruits of both mystery streams thru the actual awareness & experience of His Being in the sphere of the Earth.**

These 2 paths must become united. Every human being is now being asked to make a connection to the outer, into nature & the cosmos, as well as, to the inner, into our own beings.

Otherwise, if the 2 streams continue to develop separately they fall prey to the adversarial forces mentioned above.

Many folks have been quoting from Steiner's lectures given at the 'Easter Paradox of 1924', where he speaks about the Northern Adonis Mysteries, as a justification for celebrating Easter-tide according to the fixed date.

But we must also take into account that in March 1924 at the time of the Astrological Easter, Steiner also gave lectures to the workers from the perspective of the Southern Mysteries.

Dear friends, **we are being asked thru the 'Easter Paradox of 2019' to cultivate a new experience of Christ**, which is connected to our willingness to encounter evil;

an 'As above so Below' experience, beyond a creed, or the events in Palestine 2000 years ago; **we are called to bridge the 2 streams within ourselves, which will foster a true spiritual experience in the life-realm of the Earth.**

Rudolf Steiner's core mission was to bring an understanding of Karma & Reincarnation to the West. Perhaps **by looking into our propensity toward 1 or the other of the Streams we can find a clue to our own karma, & thru this year's 'Easter Paradox' find a way to open to the opposite stream to bring the Christ path to bear within us.**

If we are to live into: **'Christ in me'**, we must **take up this task of integration**, for the **future evolution of humanity & the Universe.**

~[Hazel Archer-Ginsberg](http://reverseritual.com/the-northern-southern-mystery-streams-as-they-relate-to-the-easter-paradox/) 16 March the eve of Holy Week 2019
<http://reverseritual.com/the-northern-southern-mystery-streams-as-they-relate-to-the-easter-paradox/>



Our Chicago community has taken on the mystery of the Being known as Kaspar Hauser this year. We will read thruout this Cosmic Holy Week, recognizing that

confronting challenging cosmic alignments is part of humanities calling, to face, name & work to redeem evil.

We will continue this Study during the Ecclesiastical Easter-Tide, so that like Rudolf Steiner, who gave lectures during the 'Easter Paradox of 1924', on BOTH the Cosmic & Ecclesiastical dates, we will be working to bridge the 2 streams.

Interesting to note that the lectures to the workers (Southern Stream) “**Star Wisdom, Moon Religion, Sun Religion**” & “**Easter as a Chapter in the Mystery Wisdom of Man**” centered around bringing the wisdom of the Magi (Northern Stream) to the Shepherds (Southern Stream).

And the lectures to the members of the Anthroposophical Society (Northern Stream) “**The Easter Festival in relation to the Mysteries**” gave the Magi a profound look into ancient mysteries of Adonis & Ephesus, the distinct worldview of the Shepherds.

And in the **Young Doctors Easter Course** given at that same time, by Dr. Steiner & Dr. Ita Wegman (Southern Stream) they are given these verses to meditate on:

“Behold what is joined in the cosmos,
And you will feel the forming of the human being
Schau, was kosmisch sich fügt
Behold all that moves you in Air
And you will experience the ensoulment of the human being.
Schau, was luftig dich bewegt
Behold what is changed in the Earthly
And you will discern the spiritualizing of the human being.

The whole planetary system is connected with substances that are remedial:

Saturn = Lead

Jupiter = Tin

Mars = Iron

Sun = Gold

Venus = Copper

Mercury = Quicksilver

Moon = Silver.

(see **Lili Kolisko's experiments** done during the Easter Paradox of 1943)

If you think about these lines again and again they will help you to realize what is built into the human being out of the cosmos, out of the earth's periphery, and by earthly forces. If you will meditate on these questions in the light of the following lines, you will learn to look into the real nature of the human being:

Behold, what is joined in the cosmos:
You feel the forming of man.
(that in connection with Moon)
Behold, all that moves you in Air:
(for example, in breath or in blood circulation)
You will live man's ensoulment.
(that in connection with Sun)
Behold, what is changed in the Earthly:
(especially what also brings death to the human being)
You will discern the spiritualizing of man.
(that in connection with Saturn)"

What a powerful opportunity for all of us to practice the Science of the Spirit.

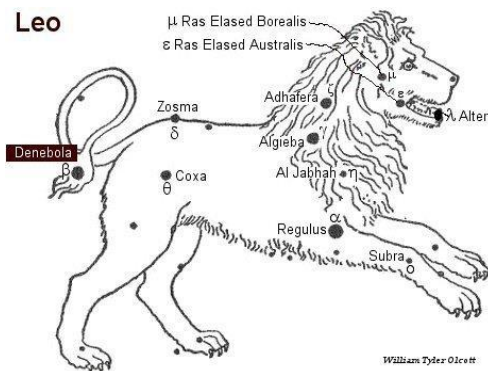
~Hazel Archer-Ginsberg <http://reverseritual.com/the-eve/>



At the bird sanctuary, aptly named the '**Magic Hedge**' near my home at the edge of the '**Great Inland Sea of Chicago**', the sky lightened when the sun rose on this Vernal Equinox morning, but the clouds & persistent drizzle did not reveal its glory. I had to watch for other signs of Spring – the sweet earthy scent rising up from the mud, a patch of purple crocus pushing up from the dead grass, the activity of the animal kingdom, robins, starlings, a coyote family by the red dogwood tree, the song of the wind in the still bare branches, the way the water grabbed at the shore, the wet rocks gleaning in the grey. Yes, **magic is abounding thru the elements, waiting to be seen & blessed by human hearts, held with awe & wonder.**



As I stroll along the shore, open in reverence, I contemplate **our Holy Week study of Kaspar Hauser**, & I am deeply struck by the profoundness of the celestial association that was given as an imagination at his death by **professor Daumer**, his teacher & care giver, who **Rudolf Steiner** called “**The last Rosicrucian**”. Steiner often repeated this when speaking of **Kaspar Hauser as a ‘stray Atlantean’**, that when he died the ‘**Sun was setting in the West & the Moon was rising in the East**’ – a true **Easter image**. And so fitting for this year’s Easter Paradox, where the **1st Full Moon after the Spring Equinox (tonight at 8:43 CDT)** is, according to **Astrosopher Johnathan Hilton**, in **Denebola**, the tail of **Leo the Lion**, which in ancient Arabian astrology was said to portend misfortune & disgrace, which can certainly be related to the outward aspect of **Kaspar Hauser’s** destiny. And yet according to the **Kabbalists**, it is associated with the **Hebrew letter Kaph** & holds the image of **Strength**, which points up his spiritual task.



It’s easy to want to turn away from pain & suffering; but by doing so we miss the opportunity to heal & redeem evil during this 1st cycle in the ‘Easter Paradox’ of 2019.

I am new to this study of **Kaspar Hauser**, but I am not new to pain & suffering, & the ever-clear calling of karmic healing. From the beginning I was struck by what seems **an important relationship between Kaspar Hauser, Christian Rosenkreutz, Rudolf Steiner & The Christ**.



We know that Rudolf Steiner was bound by the occult rule prohibiting him to speak about a Rosicrucian initiate directly, but it is important to note that it was in Malsch, near **Karlsruhe**, where **Kaspar Hauser was born on Michaelmas Day in 1812**, that Rudolf Steiner laid the foundation stone of the first anthroposophical building, known as 'Francis of Assisi', which he referred to as a '**Rosicrucian temple**', on the night of the **Pascal Full Moon of 1909**.

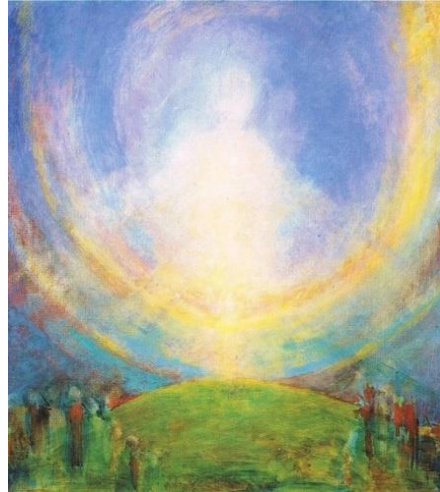
At this event he spoke about the Full Moon as the spiritual sphere of birth & death, & how humanity moved from a state of innocence into the evolution of consciousness through the encounter with evil, which brought in death; & he called us to work to spiritualize matter.

This seems to reflect not only humankind's journey as a whole, but also the life of Kaspar Hauser in particular.



Rudolf Steiner gave many groundbreaking lectures in Karlsruhe, including speaking for the 1st time about the 'Second Coming of Christ'. It was there that he also revealed the nature of the human 'Phantom', & the 'Resurrection body'. And then at Michaelmas, 99 years after Kaspar's birth, Steiner compared for the 1st time the methods of the Rosicrucians with those of the Jesuits, a direct clue to the workings behind Kaspar Hauser's mystery. Some say the Church began their attacks on Rudolf Steiner's because of these powerful Karlsruhe lectures.

When asked about Kaspar Hauser's previous lives, Steiner said he could not find an earlier incarnation; that he was a higher being who had a special mission on the Earth, working from an impulse coming from Rosicrucian origins.

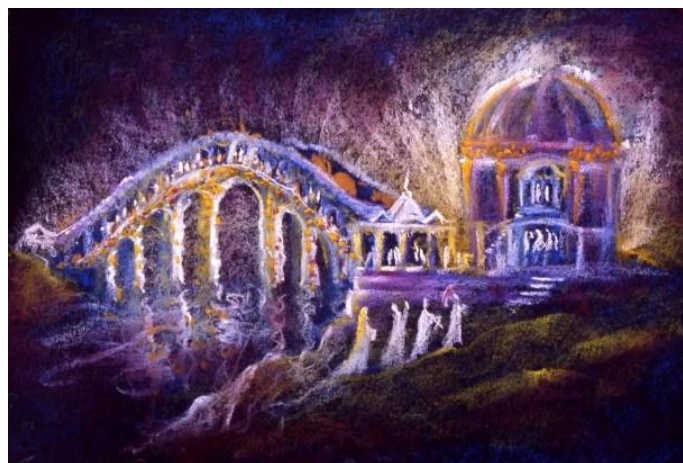


Could it be that this individuality is a sort of Angelic Being, like the Nathan Soul, held back in the Spiritual World to fulfill a special mission? Coming, in the latter case, to give physical expression to the Cosmic Christ; & in Kaspar Hauser's case, come to reveal the Etheric Christ, appearing in the realm of the Angels working from the Moon to the Earth?

The counterforce to this etheric appearance came in 1933, when Hitler & the Nazi Party held sway in Nuremberg, where 'the Child of Europe' was murdered in 1833 a hundred years before.

It reminds me of how Steiner described a 'Second Crucifixion', in the 1840s, of the consciousness of the Angelic Being that was bearing Christ in the etheric realm, a kind of 'suffocation' brought on by materialistic thinking, which formed a sort of black cloud in the supersensible sphere between the Earth & Moon.

But as Steiner tells us, this sacrifice by this Angelic Being – has made it possible for us to renew & deepen our understanding of the Mystery of Golgotha, which brought the possibility for the redemption of our physical bodies, & which, because of this 'Second Crucifixion', could now be experienced on the level of our formative forces, helping us develop a new clairvoyance in the etheric realm.



David Newbatt

These thoughts lead us to Steiner's statement that: **"If Kaspar Hauser had not lived and died as he did, the contact between the Earth and the Cosmos would have been completely severed."**

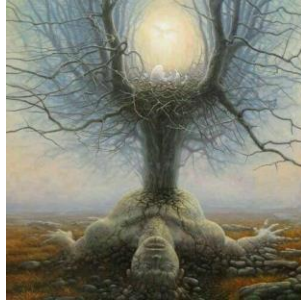
So, my friends, to see Kaspar Hauser's sacrificial life in this light, so intimately connected to this 'Second Crucifixion' & the 'Second Coming of Christ', so reflective of our 2 modern Rosicrucian Initiates, in alignment with the life of Christ, it seems to make sense to build this consciousness during this sacred Easter-Tide.



I look forward to continuing the hero's journey throughout this Easter Paradox, exploring both dates, listening to the Elemental world, working with our friends & fellows, & with the 'ever present help of the Spiritual World', on this side of the Threshold & beyond, to ask the Parsifal Question, in the search of the Holy Grail & the Dawning of the New Sun.

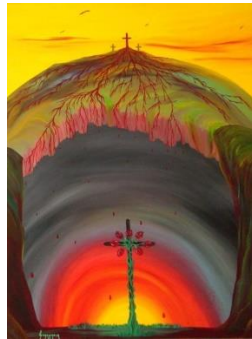
In Vernal Balance Be –

~Hazel Archer-Ginsberg, 20 March 2019 <http://reverseritual.com/in-vernal-balance-be/>



Dear friends, with these truths in mind, I am changing our Festival programing. We will begin our **Holy Week Study**, exploring **Kaspar Hauser**, on the **True Palm Sunday March 17th 2019, 2 pm – 4pm**,

We continue **Holy Monday** thru **Holy Saturday, March 18-23**, from **7 pm – 9 pm**,



& on the **True Easter Sunday March 24th 2019**, from **2 pm – 4 pm**, our Festival will revolve around **The ‘Golden Legend’ & The ‘Rose Cross Meditation’**.



(Prinz Caspar, 1812– 1833)

For our study we will take up: **‘Kaspar Hauser: The Struggle for the Spirit’** by Anthroposophical researcher **Peter Tradowsky**. I have ordered copies to be given out on a **1st come basis at cost: \$23**



We are also re-scheduling Fred Janney's workshop: **Anthroposophy: What Ails Thee'** to **Saturday 6 April 2019**, from **7 pm – 9 pm**, & **Sunday 7 April, 2019**, from **1 pm – 4 pm**



Since Easter-Tide also includes **Ascension, (Thursday May 2nd 2019)** & **Whitsun (May 12th 2019)** at the Rudolf Steiner Branch in Chicago, **Ascension** will be celebrated on **4 May 2019**, 7 pm – 9 pm, & in **Ann Arbor** on **Tuesday 7 May 2019, 7-9pm**. (With **Whitsunday** falling on Mother's Day we may not do a Festival Let me know what you think?)



Please Contact me with any **questions**

Before the Mystery of Golgotha, the task of evolution was for the spirit to become human; after the 'turning point', humanity must strive to become spirit; co-creators in freedom, of 'The New Sun'.

May we awaken to the True Dawning of our Human Calling.

~Hazel Archer-Ginsberg

P.S. Folks no need to stress...We can celebrate both dates with JOY!

Here is another Rudolf Steiner [Lecture](#) that is a good resource