

e-Correspondence

from the Central Regional Council
of the Anthroposophical Society in America



June, 2014

Communication Support:

If you are receiving this email as the contact person in your area, **please forward it on** to all the members in your group, branch or initiative. We want to ensure that all our members in the region remain connected. If you prefer that another member of your group be responsible for receiving and passing this on, please let us know. **We need your help and thank you.**

Contents:

[Speaking with the Stars](#)

[News from the Central Regional Council](#)

[Summer Solstice](#)

[St. John's Eve poem by Hazel Archer Ginsberg](#)

[What's Happening in our Region](#)

[Reflections from The Human Heart weekend](#)

[Voices of the Heartland](#)

[What I seek ~ poem by David Howerton](#)



© 2014 Daisy Hu

Speaking with the Stars project

~ Initial review by Cheryl Lawler, St. Louis, MO

The Central Regional Council held its annual planning meeting in the magical setting of The Headlands International Dark Sky Park in Emmet County, MI from Sunday, June 1st through Wednesday June 4th. The gathering was accompanied by sunbeams on the lake by day and starbeams and moonbeams by night. Throughout the retreat, we enjoyed excellent meals provided by Bliss Gardens Farm, a Northern Michigan biodynamic initiative. It was the perfect setting for the commencement of our project, "Speaking with the Stars."

We were guided in our journey by Mary Stewart Adams who reminded us that we are at the beginning of very auspicious cosmic activity. As a group we grappled with the question, "how can a community of individuals informed by anthroposophy engage in activity that is both informed by the current celestial gesture and by their shared ideas with one another?" This is being carried as a research question which the Central Region is undertaking as we move through the eclipse seasons of 2014 and 2015. Throughout these two years there will be a total of four successive total lunar eclipses (called a tetrad), and one total solar eclipse (not visible in North America), each occurring near the sacred festival times at spring and fall equinox.



We joined Marianne Else in social Eurythmy, engaging the movements of the seven-pointed star which opened toward the future. This became a focal point for our work together. Festivals coordinator, Hazel



Archer-Ginsberg also helped keep us grounded and lead us in a rhythmic journey through the cycle of the year. Our hearts were made joyful through the “Songtrails” led by Marianne Fieber with Dennis Dietzel. Our guides, Alberto Loya and Mary Louise Hershberger held the space for our activities and David Howerton led us in imaginative contemplation.

Out of our nebulaic activity several initiatives were birthed to take back to our respective communities. Some of these included a greater web presence that would begin to archive materials and provide an open forum for ongoing dialog amongst ourselves, social eurythmy, and contemplation/ observation of the night sky. Mary stressed the relational nature of our contemplative activity. The stars are not fixed beings as we tend to think of them but evolving beings that, like the rest of the living world, are eternally creative. In a Goethean sense, the conscious direction of our will forces toward communion with the stars opens a portal for a process of co-becoming with them. We were left with a deep appreciation for our responsibility for engaging with the stars.

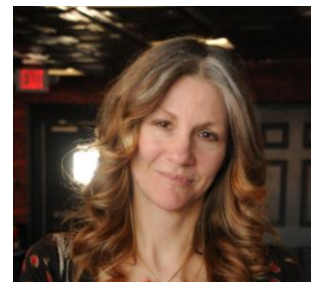
For more information about Mary’s work, visit www.fairytalemoons.com or email her at starmare.adams@gmail.com. Her “Engaging with the New Images of the Zodiac” webinar can be found here: <http://www.anthroposophy.org/webinar-mary-adams/>.

For more information about the “Speaking with the Stars” initiative and access to all issues of the CRC e-Correspondence, visit www.anthroposophy.org/groups/central-region.

Notes and additional reports will be posted in the coming weeks. A regional conference call is being planned for interested regional members to hear about next steps being planning for this region-wide project.

News from the Central Regional Council:

During our gathering in Michigan, it was announced that Hazel Archer Ginsberg has been brought on as a member of the Central Regional Council. We have all benefited from her dedication to the festivals of the year as she has written many articles and provided numerous imaginations throughout this year as the earth moved through its seasons. You may recall our request for nominations to fill out the Council after Margaret Runyon determined thirteen years were sufficient. We pursued different suggestions and during our gathering last May in Viroqua, WI, Hazel appeared on the scene and demonstrated interest and more importantly willingness to dive in and help shape this new work to take us into the future. We are in a different place and working toward a different type of event in spring 2015. Our annual meeting this year was replaced by an envisioning retreat for the Speaking with the Stars project. During this gathering we realized there is still a need to hold a “business” meeting whenever there are several regional members gathered. We found a way to squeeze this into our already full program in answer to questions around the genesis of the Council and membership changes. Much of that information can be found on our webpage. Some of the documents will now need to be updated, but you are invited to look at them to gain some additional insight into how we work.





Summer Solstice comes at the precise moment when the sun's power is at its peak. Solstice means 'sun stands still' because the sun rises and sets in the same spot for a few days. Here in the northern hemisphere, this is the longest day and shortest night of the year. From then on, the days will get shorter. This phenomenon is a direct result of the Earth-Sun relationship. After peaking, the Sun begins to wane, and the journey into the harvest season begins.

It has always been an important solar event throughout the evolution of humankind. The axis of Stonehenge and the Temple of the Sun in Mexico are both oriented in the direction of the Midsummer sunrise.

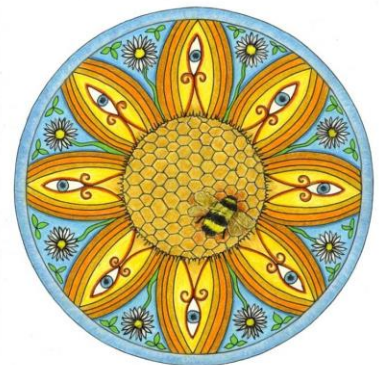
Astrologically the Summer Solstice corresponds to the entry of the Sun into Cancer, interestingly a water sign governed by the moon. Cancer symbolizes the moving waters of our inner life, our moods and cycles, our instincts, intuition, our juiciness. It is the force and power of our imagination, our emotions, and our roots. A reflective, passive, cyclic force, this sign marks the intimate inner world, personal and family bonds, as well as our larger collective family, with an accent on the tribe, the clan, and a sense of belonging.

The Festival of Summer Solstice is sometimes called Midsummer's Eve or St. John's, and it is celebrated like other 'holy days' on the Eve, starting at twilight, when the power is most concentrated.

Midsummer's Eve is a magical time to communicate with the plant & fairy spirits, as it is the time of the herb harvest. All plants gathered this night are considered exceptionally potent for healing and ritual purposes.

St. John's Wort and other healing herbs are placed around the home for protection as they dry. They are also thrown into the Midsummer bonfire, and when the coals have cooled down the ashes are mixed with water and sprinkled on the fields, the four corners of the home, and the on the head or feet of the children.

Royal fern seeds gathered at midnight on the eve are said to make you invisible; rub the blossoms on your eyelids to see the wee folk, which will also make you wealthy and wise, but be sure to carry a bit of rue in your pocket or you might be 'pixie-led'. Can't find the rue, then turn your jacket inside out and follow the old 'Ley-Lines', which will keep you from getting lost in fairy land.



St. JOHN'S EVE in the tropic of cancer

WILD PAN THE BAPTIST
WITH WORT & RUE IN HIS POCKETS,
HORNS OF LIGHT FRAMING
THE DREADED FORERUNNER
DANCING IN FAIRY RING CIRCLES
ANOINTING THE MISTLETOE
IN THE OAK GROVE...

THE GOD HAS GONE INTO THE GRAIN
THE SUN IS ON THE WATER
THE EDGE OF THE RIOTING ROSE
BEGINS TO MELT
ITS SCENT IS HEAVY ON THE HEAT
STEALING THE BREATH
FROM THE HOT MOUTH OF GOD
HER INFERRED RUBY STEAMS
THE MAGNETIC STAINS OF LIGHT
TO GUIDE THE SUMMER-TIDE SOUL
INTO THE LABYRINTH
WHERE THE OAK KING CRESTS
& GIVES WAY
TO THE DARK HOLLY TWIN...

THE HISSING SERPENT
A ROUND WRITHING EGG
CHRISTENS THE HONEY MOON WITH MEAD...

AWAKEN THE GATE
MEDITATE THE LAUREL GRAIL
& ST. JOHN'S SPEAR
UNDER CANOPUS SQUARED
A PACKSADDLE BEAM
CAPPING AN ARCH
AS ARGO SAILS THE DIPPER FLOCK
FROM THE TOP OF SEVERITY
TO THE MOUNT OF THE MANGER...

PIN A TALE ON THE DONKEY
PUT A FENCE AROUND THE GOAT....

-hag

Divination on matters of love is especially powerful on Midsummer's Eve. Young women place yarrow or other herbs and flowers native to their part of the world peaking at this time, under their pillows, to dream of their future mates.

Called St. John's Eve by the church, this is traditionally the time when the herb St. John's Wort reaches its full potency. Since it is a solar herb, it is used to bring the power of the sun to people who suffer from depression.

The ancient Druids celebrated the Summer Solstice as the Wedding of Heaven and Earth. The Goddess manifests as Mother Earth and the God as the Sun King.

In even earlier times, the sun was perceived in its shining prime and glory – giver of light and heat and life, as the effulgent force of the Feminine - a passionate aspect of the versatile Great Mother, who issues forth and supports all life.

The Solar Goddess was known in many ancient cultures and Her Priestess' were highly regarded as healers and Psychopomps - Spiritual guides, initiating supplicants into the mysteries hidden behind the blinding light and fire of the solar disk. They used the first mirrors or lenses to harness the sun, to start the altar fires and to cauterize wounds for healing.

During the time of the ancient Egyptians, Sirius, the Dog Star rose on the Summer Solstice, heralding the beginning of their new year, just before the season of the Nile's flooding.

The sun itself was deemed to be the all-seeing, all knowing, all powerful eye; but It was also known to be the "scorching eye of Ra" burning away the shadows, like a laser in the hands of a surgeon, cutting away disease, a power not to be taken (pardon the pun) lightly.

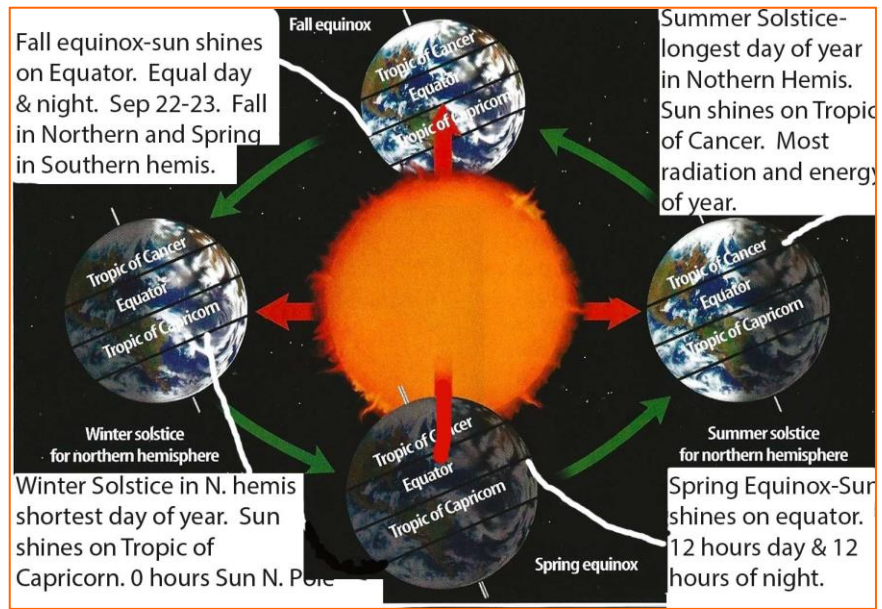
Probably the most ancient source of the Solar Force known to humanity is an Egyptian lion-headed

Goddess called Sekhmet. She displays all the passion of the noonday-sun at its peak, burning away all that does not serve, rousing us to dance our true power, in the magic ritual of our transformation.

Solar energy and its radiations are said to be the cause of evolution itself, reminding us that we can take an active role in our evolutionary process by aligning ourselves with this Solar Power, plugging in directly to the source of ourselves, to the source of action and passion.

But remember, at this time of the zenith, the brightest light, casts the deepest shadow.

~Hazel Archer Ginsberg, Festivals Coordinator and Council Member of the Chicago Rudolf Steiner Branch



What’s happening in our Region?

Follow the link: <http://www.anthroposophy.org/groups/central-region/>

REFLECTIONS from

“THE HUMAN HEART- Its Physiology in the Context of Reincarnation and Karma”

~ a workshop with Dr. Armin Husemann & Lynn Stull, Eurythmist ~ May 16-18, 2014

~Submitted by Mary Louise Hershberger ~ Fargo, ND

- ∞ “Is the Heart a Pump?”
- ∞ “Life and Soul in the Movement of the Blood”
- ∞ “The Upright Human - an Awakening for the Heart”
- ∞ “The Heart as an Organ of Karma”

Can you imagine what was revealed in these four lectures?

Sponsored by Great River Anthroposphical Circle Endeavors (GRACE) and warmly held within a matrix of relationships developed over decades, over 50 individuals from North Dakota, Minnesota, Wisconsin and Maryland came together at Camphill Village Minnesota to participate in a living heart experience; to discover answers... and questions.



Here are excerpts from our reflections ~

~ [The workshop] really felt like a wonderful way to connect with the larger heartland group.

~ Sheila Andersen, Minneapolis, MN

~ This conference was beautifully conceived, with music, eurythmy, and experiences in nature interwoven with the presentation of spiritual content. The picture of the human heart we received from Dr. Husemann was visible in the macrocosm of the conference itself: the heart (content) was embedded in and constantly informed by the etheric flow of life (music, eurhythmy, nature) from the periphery.

Dr. Husemann's lectures built upon themselves in one great crescendo to the final picture from the Gospel of St. John. We worked together with him, in his great effort to express all he had within him in English, in building up our forces to receive the totality of this way of understanding the heart and circulation, our uprightness and being human on the earth.

~ Marianne Dietzel, Roseville, MN

~ I appreciate the way Anthroposophy approaches a topic first from natural science and proceeding from there to a more artistic, participatory view and that is what Dr. Husemann did in his lectures about the heart. I became aware that I am asleep to what is really happening in my own body as he spoke about the physical/etheric/astral processes taking place in our metabolism and circulation. Of course, as human beings we have an ego, which as Dr. Husemann said, pushes back the physical laws so that we can stand upright. Standing upright allows us to be creational beings. Our ego is like the sun that draws the fluids upwards in the plant. Our ego is an inner sun that draws the blood up against gravity as well as keeping us upright. I am filled with wonder for these mighty processes working in our lives. And I also feel remorse that I take so much for granted. I am deeply grateful to the Creator Beings who work tirelessly to make life possible and I am grateful to Anthroposophy and Dr. Husemann for helping me to awaken to the spirit in life.



~ LuAnn Hagel, Moorhead, MN

~ BRAVO!! The piano concert was a delightful surprise and a perfect enhancement to the workshop material. The cluster chat groups were very helpful; similar to a valve on a pressure cooker. Everyone in our group seemed happy and relieved to have the opportunity to express what was happening for them; Herr Doctor Husemann's reverence and love when mentioning Rudolf Steiner was inspiring and heart touching; I left the week-end carrying two questions given by Dr. Husemann: Do I fit with my own Higher Being? Do I obey my Higher Being, who is with the Christ?

~ Mari Lynn Campbell, Fargo, ND



~ [I valued] the opportunity for intimate sharing among the conference participants, both in informal discussions and in the smaller group discussions. Two people shared the untimely death of their children and two other participants shared the loss of their son and the loss of their mother to suicide. This made me aware of the need to share the losses and sufferings of our fellow Anthroposophists across the nation.

~ Richard Swerling, Baltimore, MD

"Voices of the Heartland" in Concord, MA

Richard Kotlarz (Minneapolis), Karin Layher (St. Louis) James Ulness and Mary Louise Hershberger (Fargo) are bringing "Voices of the Heartland" to Concord, MA as one of over 100 offerings during the re-founding of the "Village University, June 18-July 9, 2014. Please hold us and this event in the center of your hearts!

~From Andrew Linnell, president of the Boston Branch of the Anthroposophical Society

Those of us who study Rudolf Steiner know that he spoke of a battle that the archangel Michael waged against the dragon. At the moment of victory in 1879 when Michael overcame the dragon and cast him down, the Concord School of Philosophy & Literature opened its doors. In 1979, for the Centennial celebration at Concord's Hillside Chapel, the founder of Emerson College in Forest Row, UK, Francis Edmunds, spoke of Emerson, Thoreau, and Alcott as Grail Knights in America. Now, this year, comes the "Village University" that seeks to renew this Michaelic initiative, Transcendentalism. Rudolf Steiner remarked that had he been born in America, he would have based his Anthroposophy on Ralph Waldo Emerson's work.

Please read more in the invitation found by [clicking this link](#), or visit this website: www.concordium.us

In the spirit of individuals in community ~ Mary Louise Hershberger

***What I seek is what will show.
If I gather but don't let go,
if I reap but do not sow,
how am I to change and grow?
Love calls for me to know
how to freely receive and then bestow.***

***Oh flute,
thou play so sweet.
Vibrating tones of beautiful melodies issue forth through you.
I thank and recognize thee.
But if I am to see you rightly,
I must hold in even higher reverence and veneration
the one whose breath stirs to life the beautiful melodies from you.
If I am to truly know you, I must not stop at perceiving only the instrument,
but must recognize the musician, the conductor and the composer of the cosmic score.***

***In times past we gazed up to the heavens and brought into view
the living beings of the stars and what they held to be true.
Upon approach of the dawn, the star filled night gradually turned into day.
The dreamy human capacity to perceive in the spirit slowly faded away
though our physical senses began to enter clear light.
Soul spiritual perception slowly dimmed from our sight.
Then the most momentous of events on earth was achieved.
The word became flesh and united with man.
From his loving deed flowed the radiant impulse we need to understand.
Take heed of the rising morning star,
now his countenance points the way for the kingdom of heaven is at hand.
Before the fifth letter has come to pass, before this epoch's day is done.
If we make ready our souls, we may perceive the stars as well as the sun.***

Offered with love, David Howerton member of the Anthroposophical Circle St. Louis



If you have any suggestions or contributions for upcoming issues, please send them to Marianne Fieber at marianne.fieber@yahoo.com. In the subject line, indicate that they are for the e-correspondence. We hope this format will help us reach members in a timely way with information that is of interest.

Some simple guidelines for submissions:

- * Deadline: 3rd Saturday of the month
- * Electronic submissions only to marianne.fieber@yahoo.com
- * Poetry or thoughts coming out of your work with anthroposophical ideas
- * Activities taking place within the Central Region
- * Reports and photos from anthroposophical events offered by Groups, Branches or Initiatives
- * Activities which are led and/or developed by members living within the Central Region

Note: We reserve the right to edit contributions as needed.

The Central Regional Council is:

Dennis Dietzel, Roseville, MN
Marianne Fieber, Viroqua, WI
Mary Louise Hershberger, Fargo, ND
Alberto Loya, Ann Arbor, MI
Hazel Archer Ginsberg, Chicago, IL